

# Manage Your Controlled Documents

Engineering Drawings  
 Engineering Standards  
**Piping & Instrument Diagrams**

Vendor Data  
 Contracts  
 Loop Drawings  
 Machine Shop Drawings  
 Permits  
 Soils Reports  
 Videos

Vendor Drawings  
 Standard Operating Procedures  
 Emergency Operating Procedures  
 Construction Drawings

**Equipment Data Sheets**

Sketches  
 Maintenance Reports  
 Piping Isometrics  
 Inspection Procedures  
 Pressure Safety Valve Drawings  
 Rotating Equipment Drawings  
 Instrument/Electrical Test Reports

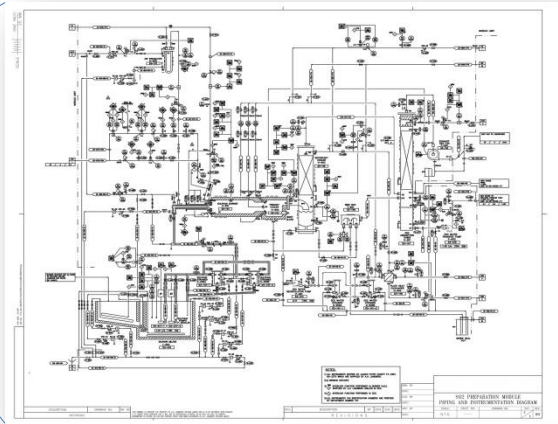
Technical Manuals  
 Plant Standing Instructions  
 Electrical Test Reports  
 Engineering Specifications  
 Foreign Prints

**Pump Curves**

Isolation Packages  
 Pipe Support Drawings  
 PSV Summary Reports  
 Instrument Service Reports  
 Equipment Repair Reports  
 Permit Maps  
 Maps

**Bill of Materials**

Test Reports  
 Technical Analysis Reports  
 Inspection Circuit Drawings



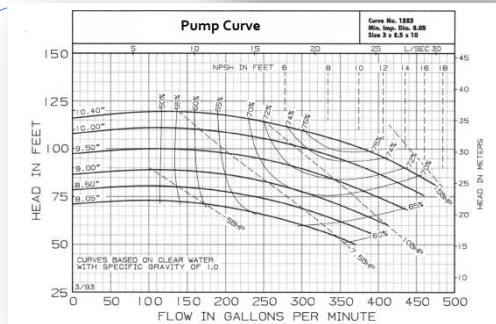
**Valve Data Sheet**

Temperature range for stem seating

| Operating Pressure | Operating Temperature | Material | Weight  | Notes    |
|--------------------|-----------------------|----------|---------|----------|
| 150 psig           | 100-200 F             | 316 SS   | 150 lbs | Standard |
| 150 psig           | 100-200 F             | 316 SS   | 150 lbs | Standard |
| 150 psig           | 100-200 F             | 316 SS   | 150 lbs | Standard |
| 150 psig           | 100-200 F             | 316 SS   | 150 lbs | Standard |
| 150 psig           | 100-200 F             | 316 SS   | 150 lbs | Standard |

Weights and dimensions

| Weight  | Dimensions      |
|---------|-----------------|
| 150 lbs | 12" x 12" x 12" |
| 150 lbs | 12" x 12" x 12" |
| 150 lbs | 12" x 12" x 12" |
| 150 lbs | 12" x 12" x 12" |
| 150 lbs | 12" x 12" x 12" |



| Specification  | Material                         | Size    | TIME Length | Valves & Fittings   |
|----------------|----------------------------------|---------|-------------|---|
| Steel Sched 40 | Steel A-106 B 36 10M Schedule 40 | 0.75 in | 150.00 ft   | 2 x Globe<br>3 x Swing Check - Inlet<br>12 x Tee - Flow Through Branch  |
| Steel Sched 40 | Steel A-106 B 36 10M Schedule 40 | 1 in    | 90.00 ft    | 30 x Globe<br>30 x Tee - Flow Through Branch  |
| Steel Sched 40 | Steel A-106 B 36 10M Schedule 40 | 1.5 in  | 130.00 ft   | 4 x Elbow - Standard 90°<br>4 x Gate - 100#<br>2 x Globe<br>1 x Reducer - Enlargement (1.5 in x 0.75 in - 1.5)  |
| Steel Sched 40 | Steel A-106 B 36 10M Schedule 40 | 10 in   | 100.00 ft   | 1 x Reducer - Contraction (10 in x 8 in - 8 in)   |
| Steel Sched 40 | Steel A-106 B 36 10M Schedule 40 | 2 in    | 580.00 ft   | 2 x Elbow - Standard 90°<br>1 x Gate - Double Disc<br>18 x Gate - 100#<br>1 x Globe   |
| Steel Sched 40 | Steel A-106 B 36 10M Schedule 40 | 2.5 in  | 105.00 ft   | 1 x Reducer - Enlargement (2.5 in x 2 in - 2 in)  |
| Steel Sched 40 | Steel A-106 B 36 10M Schedule 40 | 3 in    | 147.00 ft   |   |
| Steel Sched 40 | Steel A-106 B 36 10M Schedule 40 | 4 in    | 131.00 ft   | 6 x Elbow - Standard 90°<br>15 x Globe - 100#<br>1 x Reducer - Contraction (4 in x 2 in - 4 in)   |
| Steel Sched 40 | Steel A-106 B 36 10M Schedule 40 | 6 in    | 245.00 ft   | 5 x Gate - 100#<br>2 x Reducer - Contraction (6 in x 4 in - 6 in)   |
| Steel Sched 40 | Steel A-106 B 36 10M Schedule 40 | 8 in    | 280.00 ft   | 12 x Elbow - Standard 90°<br>4 x Gate - 100#<br>2 x Reducer - Contraction (8 in x 6 in - 8 in)<br>1 x Reducer - Enlargement (8 in x 10 in - 8 in)<br>4 x Swing Check - Inlet<br>2 x Tee - Flow Through Branch |

Version: 15.3.3726 Bill of Materials Report Monday, October 31, 2016 10:29 AM



Software. Systems. Solutions.