



## Universal Tag Locator

*Operations management software for process facilities*



Software. Systems. Solutions.

# Universal Tag Locator

An easy-to-use operations monitoring solution featuring extensive search and reporting capabilities to provide you with real-time alarm, instrumentation, target, lab, shift handover, and exceedance information directly from your facility's multiple data sources.



“A single, easy-to-use software package, putting vital data at your fingertips – no need to buy pieces from multiple vendors. UTL does it all. Plus, the AIS customer support team is terrific to work with! Whenever we have a question, they are right there for us. Great personal touch.” Riel Adalin, Client

## Critical data at your fingertips when you need it

UTL consolidates plant-wide data into a single location. You can now manage data that is accurate, timely, and reliable in ways you never thought possible.

- Alarm Reports
- Economic Targets
- Exceedance Reports
- Incident Avoidance
- Lab Data
- Operator Instructions
- Production Improvements
- Plant Metrics
- Quality Assurance
- Safety Data Portal
- Shift Reports

DOW Exceedances							
DESIGN LIMITS							
COKER_INSIDE: THERE ARE NO DESIGN LIMITS MEETING THE REPORT CRITERIA BETWEEN 1/30/2017 AND 3/1/2017 00:00:00 AM							
CR2_INSIDE: DESIGN LIMITS REPORT FROM 1/30/2017 TO 3/1/2017 00:00:00 AM							
TO RE-ENTER TEXT FROM 'REASON FOR EXCEEDANCE AND ACTION TAKEN' COMMENT TO RECORD BELOW ENTER ONLY: "							
POINT	DESCRIPTION	UNITS	DSN LO	DSN HI	% TIME IN EXCEEDANCE	VALUES OVER SHIFT	REASON FOR EXCEEDANCE AND ACTION TAKEN
	N2 RECEIVER PRS CONTROL	PSIG	380		<1%	120 - 408	The nitrogen system is adequately protected by relief devices. There are no PEI actions necessary in relation to this DOW.

IOW Exceedances								
COKER_INSIDE: IOW LIMITS REPORT FROM 1/30/2017 5:00:00 AM TO 3/1/2017 5:00:00 AM								
TO RE-ENTER TEXT FROM 'REASON FOR EXCEEDANCE AND ACTION TAKEN' COMMENT TO RECORD BELOW ENTER ONLY: "								
POINT	DESCRIPTION	UNITS	IOW LO	IOW HI	% TIME IN EXCEEDANCE	VALUES OVER SHIFT	REASON FOR EXCEEDANCE AND ACTION TAKEN	
					1.2	100%	1	It is difficult to control the sulfur levels in the HGO cut. Suggested corrosion rates corresponding to higher sulfur levels are being used to drive future inspections. The 5 Cr piping should be upgraded to 9 Cr when it reaches end-of-life.

CR2_INSIDE: IOW LIMITS REPORT FROM 1/30/2017 5:00:00 AM TO 3/1/2017 5:00:00 AM							
TO RE-ENTER TEXT FROM 'REASON FOR EXCEEDANCE AND ACTION TAKEN' COMMENT TO RECORD BELOW ENTER ONLY: "							
POINT	DESCRIPTION	UNITS	IOW LO	IOW HI	% TIME IN EXCEEDANCE	VALUES OVER SHIFT	REASON FOR EXCEEDANCE AND ACTION TAKEN
	M/U CAUS FLOW TO C-WW COL	GPM	1.5		51%		0 - 8
	REGEN GAS TMP TO CWCC	DEG F	270	390	57%		57 - 385

### Exceedance Report

Manage your targets quickly and efficiently

# Site Safety

## Process Safety

UTL interfaces directly with your plant's historian (e.g., PI, PHD, ODS, InfoPlus, etc.) to monitor and identify process risks on multiple levels throughout the plant. Real-time data and reports ensure that even the slightest variation from established operational performance is flagged.



## Environmental Safety

You and your team are ultimately responsible for building a culture of safety to protect your workers and the environment. UTL helps you measure and evaluate individual and organizational safety performance as well as instill safety in all aspects of operations including shift assignments, alarm reports, and message boards. It even provides easy access to information about alarms, including recommended actions and potential consequences.

## Design Safety

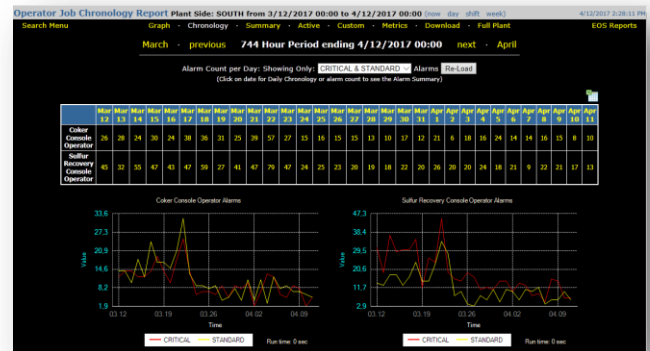
UTL was designed and written by staff with decades of oil refining and chemical processing experience. This in-depth understanding and commitment to continuous improvement of system performance, operational efficiency, environmental protection, and plant safety, makes UTL the software of choice by numerous process operators throughout the world.

UTL is currently used in 11 countries worldwide. Each week over 15,000 operators view and generate nearly 10,000 reports to keep their process facilities safe, profitable, and reliable.

## Alarm Reports

Process alarms can be managed manually or automatically with UTL. You can flag and manage inhibited and disabled alarms, navigate reports forward and backward in time, filter out undesirable alarm priorities and set duration thresholds, configure alarm priority colors and titles, and generate subscriptions that deliver reports via email. You can also create alarm metrics, alarm module by shift teams, and customize reports specific to your exact needs.

- Action Log / Standing Alarm
- Alarm Chronology
- Alarm Graph
- Alarm Log
- Alarm Rates on Targets
- Alarm Summary
- Controller Action
- Custom Alarm Summary
- Custom Date Selection
- Customizable Suppressed
- End-of-Shift Alarm Log
- Standing Alarm Responses



**Alarm Chronology Report** displays alarm data along with graphical trends

# How your site can benefit from UTL

Large scale process facilities produce huge amounts of data from a wide range of sources and devices – 24 hours a day / 7 days a week.

Managing all of this information is often repetitive and time consuming.

UTL changes all that by simplifying data management for:

- Abnormal Situations
- After Action Reviews
- Alarm Reviews
- Area Alignment - Shift Review Boards
- Business Planning
- Coking Maintenance
- Control System Status
- Crude Maintenance
- Docks and Rail Terminals
- DOW/IOW
- Emergency Responses
- Environmental
- Field Support Teams
- Fire Department
- HS&E
- IPF Trips
- Lab Data
- Logistics Support Ops
- Maintenance
- Major Threats
- Margin Drivers
- Op Orders / Instructions
- Proactive Monitoring
- Process Safety Fundamentals
- Production Health Checks
- Production Impacts
- Refinery Business Threats
- Refinery Off-Spec Products
- Shift Plans
- Situation Management
- Training
- Turnarounds
- Utilities
- Weekly Alarm Reviews

## Why AIS

With over 20 years of process industry experience, AIS develops software solutions that are tough, reliable, and capable of performing without failure under a wide range of conditions. AIS products have proven, time and again, to improve safety, lower expenses, and increase productivity. Our dedicated technical staff is on call around the clock to further provide you with an outstanding client support experience.

## Free Site Assessment

AIS offers a complimentary one-hour UTL demonstration and site assessment. During this time, we showcase the value of real-time operations monitoring and the wealth of site data that is available to you. We will also show you the ease with which you can generate shift reports, monitor your alarm data, and identify potential gaps in your system. UTL is simple to learn and easy to use, providing you instant access to accurate, timely, and reliable information.

*"This was the best software rollout that I've witnessed in 20 years of working at refineries. No plant we have ever worked at has been too large for UTL because of its unique design and scalability." Confidential Client*



# Shift Reports

The power of UTL is in its flexibility and modular scalability, allowing you to safely manage your facility to optimize performance and profitability. Quickly view and configure operator jobs, shift reports, daily assignments, and worker productivity. You can also import data from IntelTrac, DOC400, and other 3<sup>rd</sup> party interfaces.

- Auto Create and Publish
- Auto Populate
- Custom Snippets
- Data Types
- Operator Instructions
- Proficiency Reports
- Publish Queue
- Report Data Rollup
- Report Templates
- Rotation Reports
- Shift Sets / Shift Topic Reports
- Task Scheduler
- Unlimited EOSR Type Creation

What our industry partners are saying:

"UTL is for business what Google is for everyone." Confidential Client

"UTL provides a user-friendly operator interface with enhanced data access and enables improved End-Of-Shift Reporting for enhanced situational awareness." Confidential Client

## Business Planning and Economic Targeting

One of the most vital elements of your process facility is the ability to view and manage overall plant operations including staff scheduling, process efficiency, and economic trends. UTL tracks productivity and production quality, establishes process targets, and monitors economic variables.

- Lab Prioritization
- Lab Targets
- Margin Drivers
- Modal Targets
- Override Targets
- Planner / Operations Integration
- Target Change Awareness
- Target Change Notification
- Target Prioritization
- Unit Level Targeting
- Unit-to-Plant Level Integration

Margin Drivers							
MARGIN DRIVERS							
Tag	Tag Title	Units	Target Low	Target	Target High	Current Value	Economic Value (\$1k/Day)
<b>CRUDE / VPS-2</b>							
1Sample211	VPS2 Fresh Feed	MBPD	* 74.5 *			73.1	\$0.3
2Sample221	VPS2 Atmos Twr Top Temp, F	DEGF			285	266.94	\$0.0
3Sample213	VPS2 Avjet Flash Point Temp, F	DEG F			160	126	\$0.0
4Sample242	VPS2 GOLD End Point, F	DEG F	650			662.6	\$0.0
<b>LOGISTICS</b>							
5Sample511	SGP Propane to fuel					* 0 * \$59.98	\$7.6
<b>Total Margin Loss</b>							
<b>Total Yield, Conversion, Giveaway Margin Loss</b>		Total Yield, Conversion, Giveaway Margin Loss		\$/MD	* 0 *	\$20.03	\$20.0
<b>Total Feed Rate Loss</b>		Total Feed Rate Loss		\$/MD	* 0 *	\$69.61	\$69.6

### Margin Driver Report

displays economic targets impact to your bottom line

Wouldn't you want to know?

What your underperforming process unit is costing you each day!!!

*“Oil refineries, chemical plants, and industrial facilities are hazardous environments to work in. When incidents occur at these sites, it can lead to loss of life, environmental damage, and extensive down time.*

*Personal colleagues of ours were killed in one of these events. The investigation that followed revealed that this incident could have been mitigated with better access to the proper tools and documentation.*

*Our commitment is to provide high-quality software solutions that save lives, time, and money.”*



Brad Rose  
President, AIS Software



Software. Systems. Solutions.

901 Harris Ave  
Bellingham, WA 98225  
Tel 360.676.0866  
Fax 360.676.1551  
[info@aissoftware.com](mailto:info@aissoftware.com)  
[www.aissoftware.com](http://www.aissoftware.com)